

# PHILIPS

20 inch LED light bar

Ultinon Drive 2000

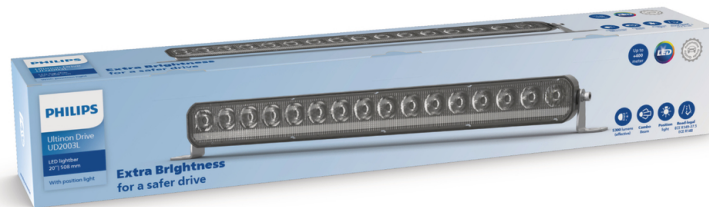
Road-legal ECE R149 - 37,5

5300 lm. +400m beam length

LED position-light function

All terrain, all weather

LUMUD2003LX1



## Boosted visibility brings safer driving

### Extra brightness for everyday use

See far and wide with crisp, white light projected up to 400 meters. The Ultinon Drive 2003L LED light bar is 100% road-legal with a tough, one-piece design integrating advanced cooling tech. It shrugs off water, dust, rust and impacts.

#### **Boosted visibility makes you safer on the road**

- Extra brightness for superior visibility

#### **Be noticed with additional position lights**

- Extra position lights that get you noticed

#### **Built to withstand difficult driving conditions**

- Corrosion-free, stainless-steel mounting brackets

#### **Robust design for challenging conditions**

- Robust design for tough environments

#### **Road-legal auxiliary lights**

- Powerful road-legal LED light bars

# Highlights

## Up to 331-meter visibility

The Philips Ultinon Drive 2003L LED light bar gives you extra high-beam brightness to illuminate the road ahead for up to 400 meters\*. Producing 5300 lumens (effective), our LED light bar complies with ECE-R149-27,5 and provides ample visibility ahead and at the road's edges for faster reactions. Its cool light color of 6000 Kelvin creates better contrast and keeps drivers focused.

## Bright LED position lights

Try our Philips Ultinon Drive 2003L LED light bar with position lights, and you'll never go unnoticed on side roads or in parking areas.

## Built for tough environments

The Philips Ultinon Drive 2003L LED light bar is built to withstand tough conditions throughout your journey. It is shock-resistant (IK07-rated) to ensure faultless performance on and off the road, with an unbreakable polycarbonate lens. It can handle immersion

in water (IP67-rated) to provide reliable illumination for your overland adventures, wherever your trail leads.

## Road-legal LED lights

The Philips Ultinon Drive 2003L series meets ECE-R149 standards and is 100% road-legal for high-beam and position-light functions. For added safety, Philips LED light bars are tested to EMC R10 specification to ensure they will function smoothly with your vehicle's electrical systems.

## Corrosion-free brackets

The mounting brackets for the Philips Ultinon Drive 2003L LED light bar are made of stainless steel, which is corrosion-free. They can withstand snow, ice and even salt. Built from durable, high-quality materials, your Philips auxiliary LED lights will provide years of reliable service.

# Specifications

## Electrical characteristics

**Voltage:** 9-30 Volt DC

## Light characteristics

**Beam length 1 lux-m:** 400

**Beam pattern:** Combo beam

**Color temperature:** 6000 K K

**Effective lumen output:** 5300 lumens

**Raw lumen output:** 9920 lumens

**Beam length 3 lux-m:** 189

## Ordering information

**GOC:** 01836694

**Order entry:** UD2003LX1

## Packaging Data

**EAN1:** 8719018018366

**EAN3:** 8719018018373

## Packed product information

**Box dimensions-L(mm):** 520

**Box dimensions-W(mm):** 80

**Box dimensions-H(mm):** 80

**MOQ (for professionals):** 4

**Number of product in the box:** 1 lamp

**Gross weight box-g:** 1072±55

**Net weight product-g:** 1392±55

## Product description

**Boost function installation:** No

**Boost mode activation:** No

**Break resistance**

**Corrosion protection:** Yes, aluminum powder coated

**corrosion-free brackets:** Side mounting brackets

**ECE R10**

**ECE R148**

**ECE R149**

**ECE reference number:** 37.5

**Heat sink:** Aluminum powder coated die-cast

**Impact protection rating (IK):** IK07

**Ingress protection rating (IP):** IP67

**Installation angle:** 360°

**Material:** Aluminum die-cast

**Number of LEDs:** 16x 5W

**Offroad boost:** No

**One-piece body design**

**Operating temperature:** -40° C to 80° C

**Parking position light**

**Plug type:** 3-pin DT Connector with 0.5m cable

**Range:** Ultinon Drive 2000

**Scratch resistant lens**

**Technology:** LED

**Width:** 508 mm / 20 inch

